

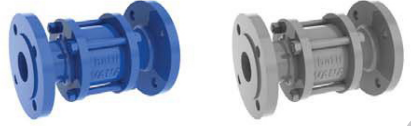
TİP TYPE: BÇV - FL

{DN 15 – DN 200}

{PN 16 – PN 40}

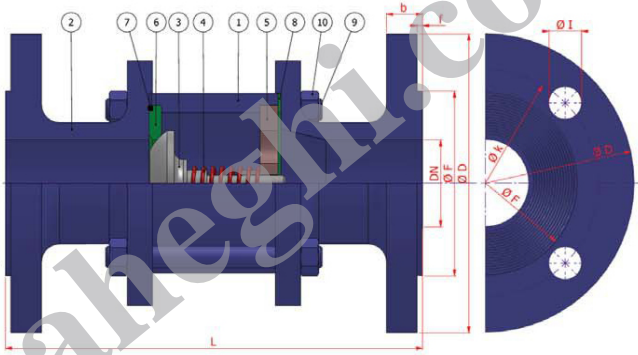
FLANŞLI
FLANGED

Boyutlar *Dimensions* : EN 558-1
Bağlantılar *Connections* : FLANŞLI / FLANGED EN 1092-1
Çalışma Basıncı *Working Pressure* : PN 16 / PN 40
Çalışma Sıcaklığı *Working Temperature* : -30 °C / + 180 °C
Kullanım Alanları *Usage Areas* : Su, Sıcak Su, Buhar, Basınçlı Hava
Water, Hot Water, Steam, Pressurized Air



MALZEME BİLGİSİ / MATERIAL DATA

PARÇA NO / ITEM NO	ADET / PCS	PARÇA ADI / ITEM DESCRIPTION	MALZEME / MATERIAL
10	8	SOMUN / NUT	S.6. 1.4301 - 1.4401
9	4	BAŞLIĞA / STOPPING PIN	CK 35 / CK 45 1.4301
8	1	GÖVDE SIZDIRMAZLIK TEFLONLU / BODY TIGHTNESS GROMMET	PTFE-Teflon PTFE-Teflon
7	1	Ö-RİNG / O-RING	VİTON VİTON
6	1	KÜRE SIZDIRMAZLIK TEFLONLU / BALL TIGHTNESS ELEMENT	PTFE-Teflon PTFE-Teflon
5	1	KÜRE YATAĞI / BALL SEAT	Ø 37.2 1.4301 - 1.4401
4	1	TAY / BRIDGE	1.4301 1.4301 - 1.4401
3	1	KÜRE / BALL	1.4301 / 1.4401 1.4301 - 1.4401
2	2	KAPAK / COVER	Ø 37.2 1.4301 - 1.4401
1	1	GÖVDE / BODY	Ø 44 1.4301 - 1.4401



BOYUT ve BAĞLANTI ÖLÇÜLERİ (DIMENSIONS AND CONNECTION SIZES)

TİP TYPE	BOYUT ve BAĞLANTI ÖLÇÜLERİ (DIMENSIONS AND CONNECTION SIZES)															
	PN 16									PN 40						
BÇV - FL	L	f	D	b	k	Hole Ømm	I	F	kg	D	b	k	Hole Ømm	I	F	Kg
DN 15 - 1/2"	130	2	95	14	65	4	14	45	2,0	95	16	65	4	14	45	2,4
DN 20 3/4"	150	2	105	16	75	4	14	58	3,1	105	18	75	4	14	58	3,5
DN 25 1"	160	2	115	16	85	4	14	68	4,0	115	18	85	4	14	68	4,4
DN 32 1 1/4"	180	2	140	16	100	4	18	78	5,9	140	18	100	4	18	78	7,0
DN 40 1 1/2"	200	3	150	16	110	4	18	88	7,2	150	18	110	4	18	88	8,2
DN 50 2"	230	3	165	18	125	4	18	102	9,8	165	20	125	4	18	102	11,5
DN 65 2 1/2"	290	3	185	18	145	4	18	122		185	22	145	8	18	122	15,8
DN 80 3"	310	3	200	20	160	8	18	138		200	24	160	8	18	138	21,0
DN 100 4"	350	3	220	20	180	8	18	158		235	24	190	8	22	162	
DN 125 5"	400	3	250	22	210	8	18	188		270	26	220	8	26	188	
DN 150 6"	480	3	285	22	240	8	22	212		300	28	250	8	26	218	
DN 200 8"	600	3	340	24	295	12	22	268		375	34	320	12	30	285	